

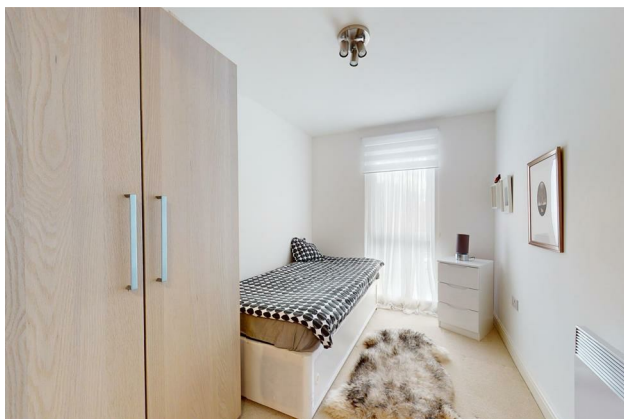
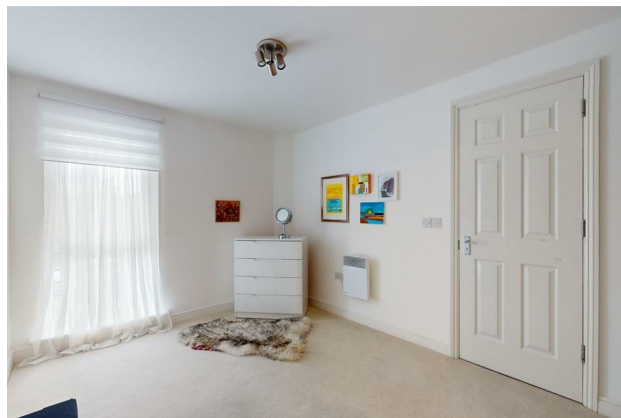
HUNTERS®

HERE TO GET *you* THERE

30 Fairfield Square, Stuart Road, Gravesend, DA11 0DT

Guide Price £210,000

Property Images



HUNTERS[®]

HERE TO GET *you* THERE

Property Images

HUNTERS[®]

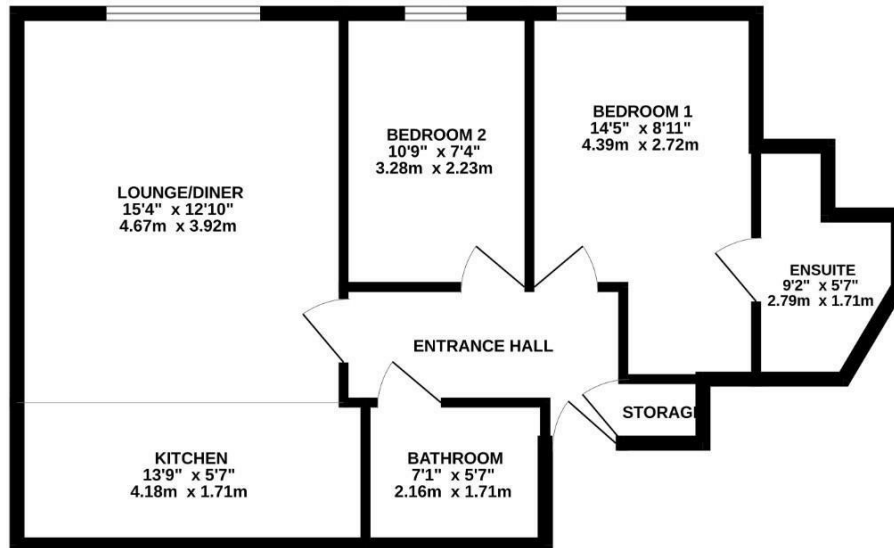
HERE TO GET *you* THERE

Property Images

HUNTERS®

HERE TO GET *you* THERE

GROUND FLOOR
610 sq.ft. (56.7 sq.m.) approx.



FAIRFIELD SQUARE, GRAVESEND, DA11

TOTAL FLOOR AREA : 610 sq.ft. (56.7 sq.m.) approx.

Whilst every attempt has been made to ensure the accuracy of the floorplan contained here, measurements of doors, windows, rooms and any other items are approximate and no responsibility is taken for any error, omission or mis-statement. This plan is for illustrative purposes only and should be used as such by any prospective purchaser. The services, systems and appliances shown have not been tested and no guarantee as to their operability or efficiency can be given.
Made with Metropix ©2024

EPC

Energy Efficiency Rating		
	Current	Potential
Very energy efficient - lower running costs		
(92 plus) A		
(81-91) B		
(69-80) C		
(55-68) D		
(39-54) E		
(21-38) F		
(1-20) G		
Not energy efficient - higher running costs		
England & Wales	EU Directive 2002/91/EC	

Map



Details

Type: Flat - Purpose Built Beds: 2 Bathrooms: 2 Receptions: 1 Tenure: Leasehold

Summary

GUIDE PRICE £210,000-£220,000.

Welcome to this two bedroom property located on Fairfield Square, Stuart Road, Gravesend. This delightful flat, boasts a well presented interior ideal for any prospective purchaser.

Upon entering, you are greeted by the open plan lounge/diner, kitchen, two inviting bedrooms with the main bedroom having an en suite and hall cupboard for storage and water heater. The property also has the added bonus of one allocated parking space.

Situated close to the town centre, this property offers the best of both worlds - a peaceful retreat within reach of amenities. Whether you fancy a leisurely stroll into the historic town, visit its numerous bars and restaurants, a quick shopping trip to Bluewater or high speed transport links into London for commuting, everything is just a stone's throw away!

Call now to arrange an immediate viewing.

Features

- TWO BEDROOMS • LOUNGE/DINER • KITCHEN • BATHROOM • EN SUITE • ALLOCATED PARKING SPACE • CLOSE TO TOWN CENTRE • WELL PRESENTED • EPC RATING C